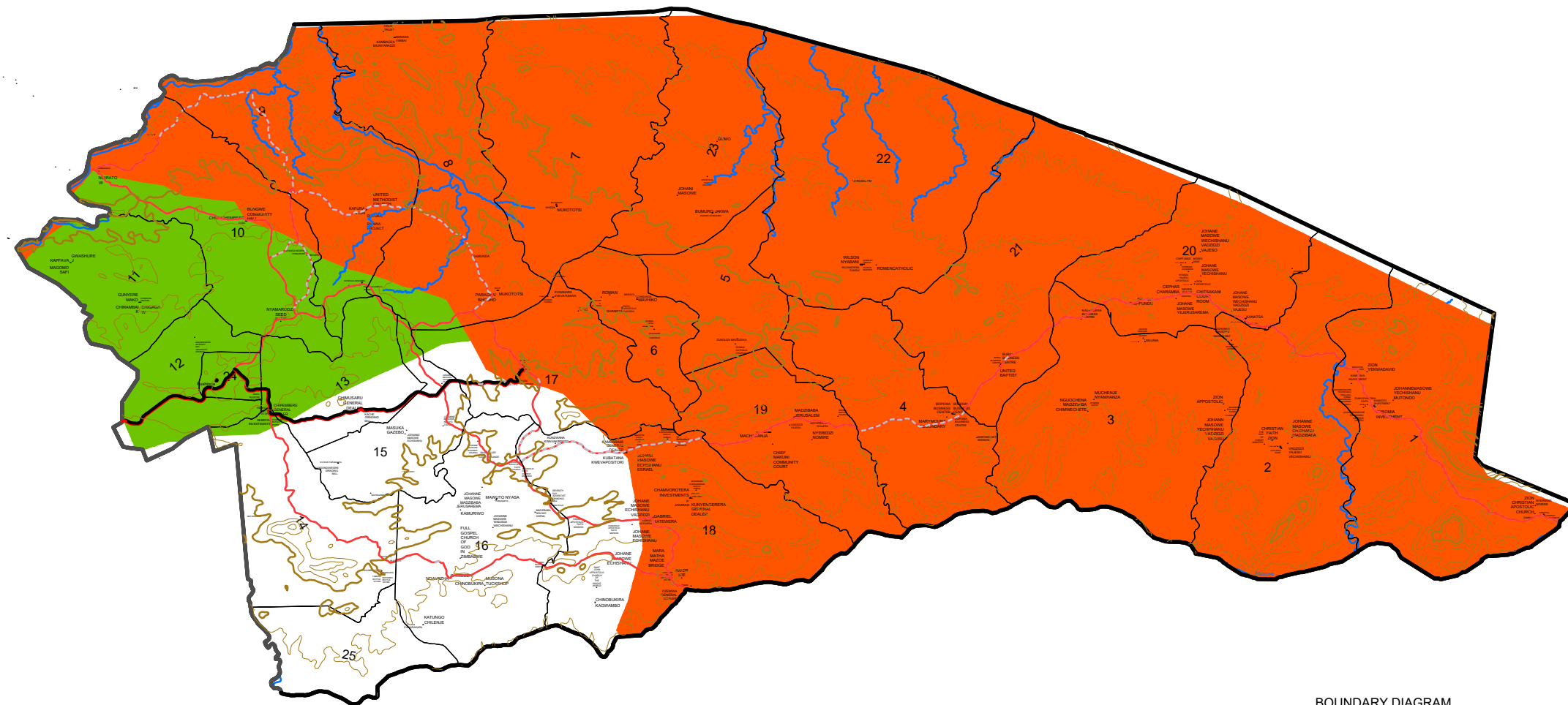


MAP 16

ZIMBABWE AGRO-ECOLOGICAL ZONES 2020 (V2)
MASHONALAND CENTRAL: Rushinga



Legend

- Place of Interest
- Business Centre
- 5 Major Town

- Provincial Boundary
- District Boundary
- Ward Boundary
- Water Body
- River / Stream
- Contours at 100 Metres Interval
- Major Road
- Minor Road


- I- Specialised and Diversified Farming (>1000mm)
- IIa- Intensive Farming (750-1000mm)
- IIb- Intensive Farming (750-1000mm)
- III- Semi-intensive Farming (650-750mm)
- IV- Semi-extensive Farming (450-650mm)
- Va- Extensive Farming (<450mm)
- Vb- Extensive Farming (<400mm)

Map Data Source: Surveyor General, Satellite Data, MSD, OSM

Coordinates are in Degrees based on WGS84 Spheroid

Users noting errors or omissions on this map should notify Zimbabwe National Geospatial and Space Agency (ZINGSA)

Produced and Published by ZINGSA Geospatial and Earth Observation Department, Number 630, Churchill Avenue, Mt Pleasant, Harare



BOUNDARY DIAGRAM

