



## DISTRICT PROFILE

P.O BOX 2107, RUSHINGA, ZIMBABWE  
CONTACT DETAILS: +263 736 997 437/ 714 113 634  
Email: [rushingardc@gmail.com](mailto:rushingardc@gmail.com) / [pmunyede@yahoo.co.uk](mailto:pmunyede@yahoo.co.uk)

# Contents



Foreword	1
Geographical Location	2
Rushinga District Map	3
Management and Organisation	4
Vision, Mission and Core Values	5
Economic Sector	6
Statistics of Social Infrastructure	7
Industry	8
Wildlife	9

## Postal Services

There is a post office in the district which provides efficient and reliable postal system to all stakeholders in the district.

## 9.0 Utilities

### Water Supply

There is a reliable water supply system in the major centres namely Chimhanda Growth point and Rushinga Rural service centre. All the other district wards are serviced by boreholes.

### Electricity

The district has got two dedicated power supply lines one for industries and the other for domestic consumption. The other rural communities rely on solar panels as the district receives enough solar energy.

## 10.0 Culture

There are a wide range of cultural activities which range from dances, crafting and songs.



## 11.0 Wildlife

The district has got a viable game park which tourists can visit to see elephants for pleasure or trophy hunting



## 12.0 Conclusion

Rushinga Rural District provides the ideal opportunities for investment in the agriculture sector. It can be stated that Rushinga is the district of "choice" as it still has its natural resources intact and waits to be fully exploited.



## 5.0 Industry

Rushinga Rural District has a small but thriving industry which includes a Cotton Ginnery and a depot for the Grain Marketing Board. The two industries employ a sizable number of employees in the district.

Besides the above big companies, there are several small –medium industries specializing in various trades.

### Commerce

The district has two operational Commercial banks namely Agribank and Zimpost which houses Peoples Own Savings Bank (P.O.S.B)

The district has two major centres namely Chimhanda Growth Point and Rushinga Rural Business Service Centre. These two centres are experiencing a boom in the development of commercial and residential properties. There are other big centres in the district which are experiencing tremendous growth in terms of business activity.

## 6.0 Social Services

The district has made big strides in the social sector, and currently focus is on the construction of new schools in areas along the border with Mozambique. Also emphasis is on the construction of clinics in the wards.

### Education

There are currently 19 Secondary Schools and 51 Primary Schools in the district. The district has (1) one boarding school and also a vocational training centre. The district needs to add more boarding schools so that pupils could be afforded enough learning time.

### Health

The district is serviced by (1) one Government hospital and (1) one Mission hospital known as Marymount. There are also (9) nine clinics which are strategically constructed in the district's various wards.

## 7.0 Law and Order

The district has got a fully fledged police force with its main office at Rushinga Rural Service centre and other small bases in the wards.

### Courts

There is a small magistrate court which is operational in the district.

## 8.0 Communication Telecommunications

There has been an upsurge in the installation of network substations in the district. All the three mobile companies namely Netone, Econet and Telecel are operating efficiently in the district with wide coverage for all wards.



# Foreword



**Council Chairlady, Cllr B. Makanga**

## FOREWORD

The Local Government fraternity in Zimbabwe has seen a major transformation over the past three decades with the demand of quality service delivery being at the fore front. This demand by communities has resulted in the establishment of 91 councils in the country, 29 being urban councils and 61 being Rural District Councils.

Rushinga Rural District Council is (1) one of the (8) eight Rural District Councils in Mashonaland Central, Province. It is a unique district with a lot of opportunities in sectors like agriculture, industry and commerce. The district is linked with a major tarred highway from Harare and interlinking with such big urban centres like Bindura and Mt Darwin. In the district there are well maintained feeder roads and access roads which enable all corners of the district to be accessed without difficulties. The district has opportunities in the Agriculture sector mainly cotton and livestock production.

The Council for Rushinga offers competitive rates for investors who intend to establish industries in the district. In terms of skilled and educated human manpower, the district has got relies with the University of Bindura which is 110 km away. The district also boasts of low crime rate and there is always peace for investors. It is therefore, the vision of Rushinga Rural District to twin with cities in China which has interest in the agriculture sector mainly cotton and livestock production.

Cllr B Makanga  
**Council Chairperson**



## 1.0 Geographical Location

The district is located in the North Eastern part of the province bordering Mt Darwin district, Mashonaland East Province and Mozambique.

- ❖ The distance from Harare the capital city of the Republic of Zimbabwe is 215 km tarred road.
- ❖ There are 25 wards in the district.
- ❖ The district area is 2 359 sq Km.
- ❖ The district consists of Communal Land.

The Map of the Republic of Zimbabwe



The Map for Mashonaland Central Province



## Statistics of Social Infrastructure

Type of Structure	No
Pre-Schools	26
Primary Schools	51
Secondary Schools	19
Boarding Schools	1
Beerhalls	4
Hospital	2
Clinics	10
Government Institutions	7
Training Centres	1



### Agriculture.

Rushinga Rural District falls in region 4 and 5. Its rainfall pattern varies around 400 mm-600mm. Major crop is cotton in which 15 000 hectares was platted in 2011-2012 agricultural season. The major investment opportunity is the construction of ginneries in the district so that raw cotton could be processed into lint without incurring costs

The district also boasts of a large herd of livestock such as cattle (50 000 herd), goats and sheep. The district has managed to rehabilitate and construct new dip tanks in the whole district to guard against disease.

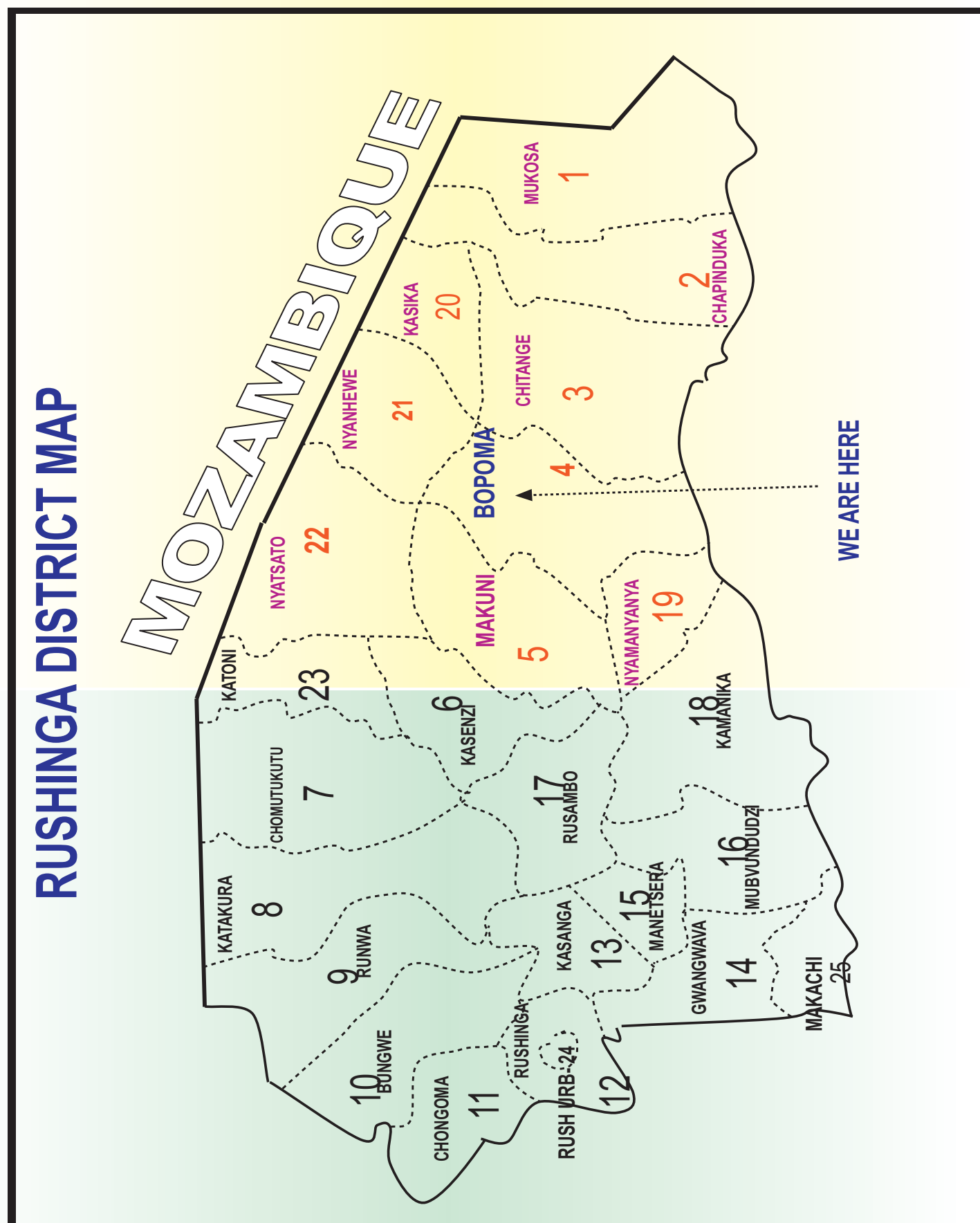
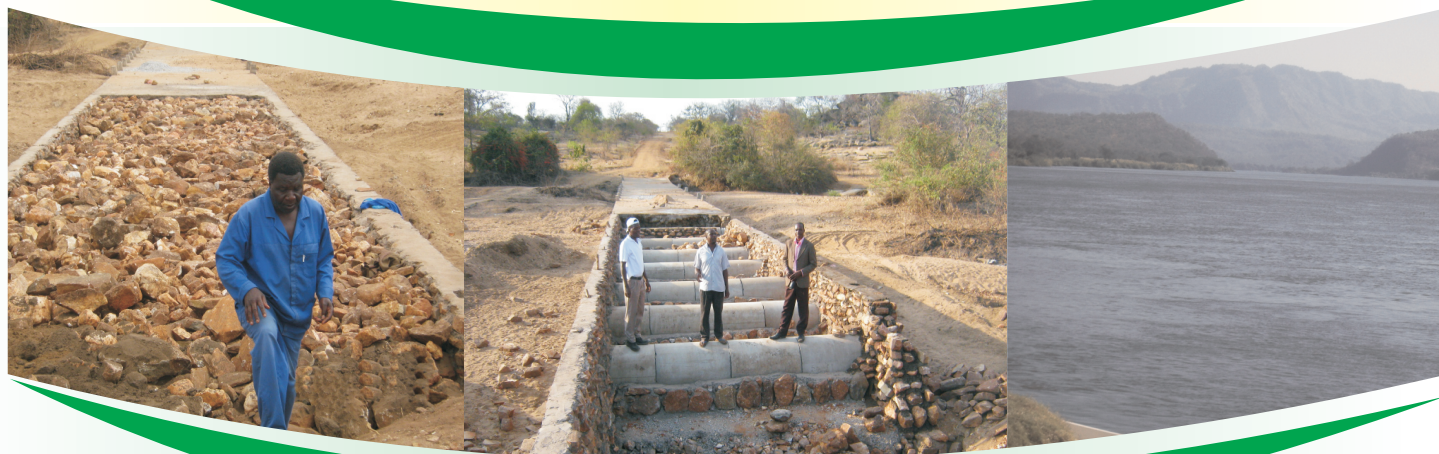




## 4.0 Economic Sector

Summarized Statistics of economic and social structure

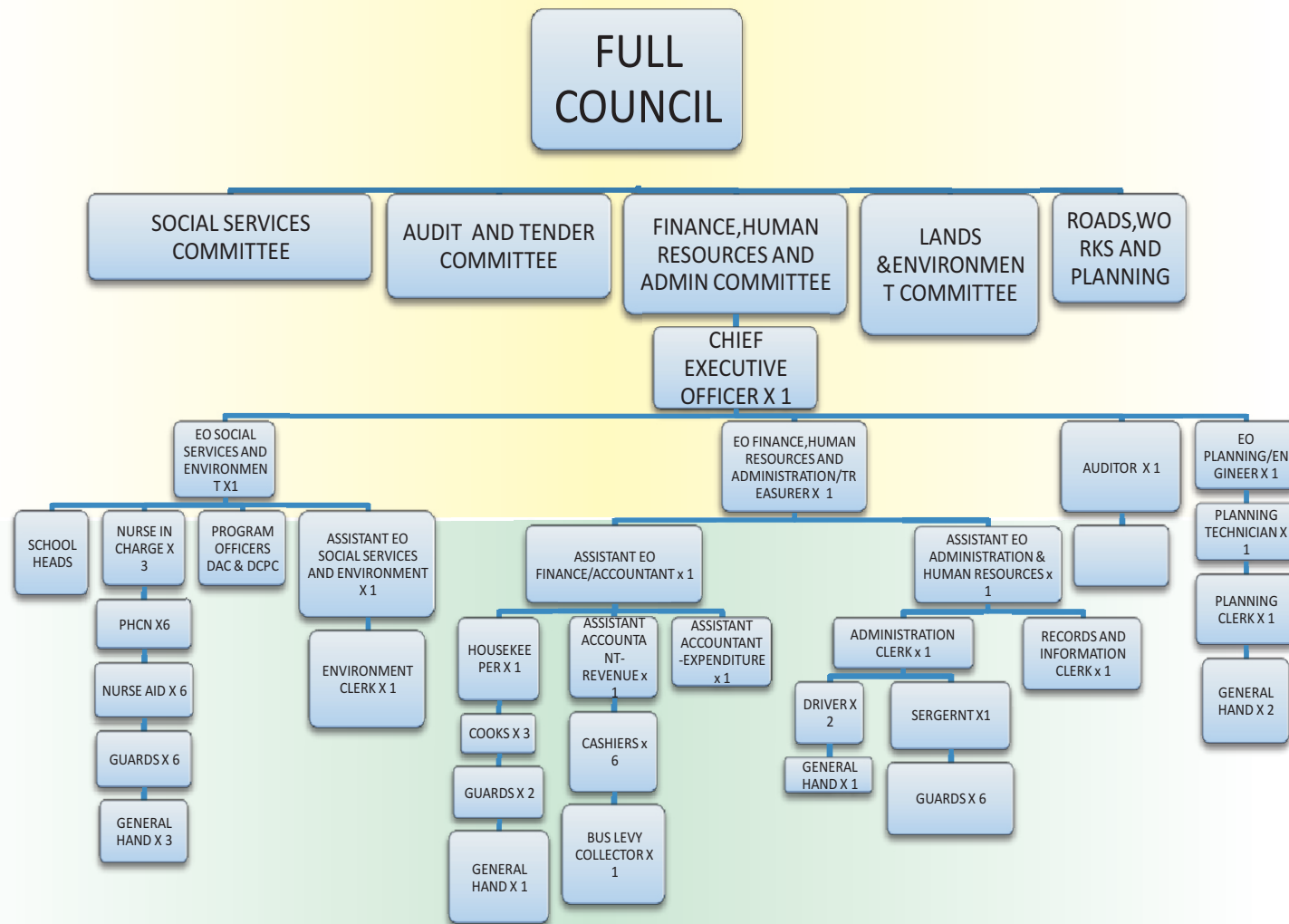
Type of Structure	No
Boreholes	463
Piped Water Schemes	2
Roads-Main	1
-Feeder	20
-Access	115
Dams	1
Weir dams	40
Business Centres	45
Growth Points	1





## 2.0 Management and Organisation

The Council has got experienced policy makers (Councillors) who craft policies on behalf of their respective wards. The executive comprises of experienced and dedicated officers who are headed by the Chief Executive Officer, who implements and executes plans on behalf of the policy makers. The Council's organogram is depicted above.



## 3.0 Vision, Mission and Core Values

### I. Vision

To have sustainable and people centred development in the district by 2017.

### II. Mission

To have the best road, education, health, recreation and commercial infrastructure, conservation and enterprise development programmes, administration communication and financial base for Rushinga Rural District Council by 2017

### III. Core Values

- ❖ Client oriented
- ❖ Professionalism
- ❖ Good public relations
- ❖ Openness and transparency
- ❖ Teamwork and team spirit
- ❖ Quality service
- ❖ Mutual respect
- ❖ Commitment

### iv) OUR MANDATE/CORE BUSINESS

Rushinga Rural District Council is the sole agent responsible for regulating development in the district as guided by the Rural District Councils Act Chapter 29:13. The council is responsible for the following; Service delivery, Social capital, Physical infrastructure, Economic infrastructure and Accountability /good governance

